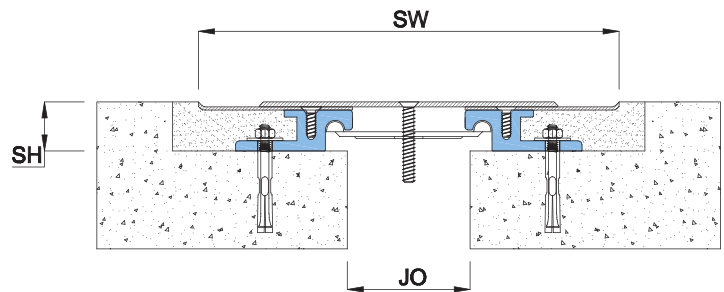
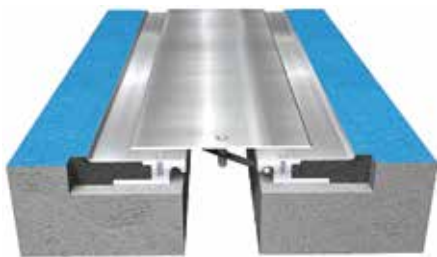


Features

- System designed to be installed in recessed floor
- Central plate and wings of 304 or 316 grade Stainless Steel
- Steel central flanges allows swift shift between positive and negative movements
- System allows full seismic movements
- System allows excellent shear movements
- Load rated for heavy vehicular traffic
- Vapor and Fire Barriers are optionally available

Straight Application GYS



GY
Series

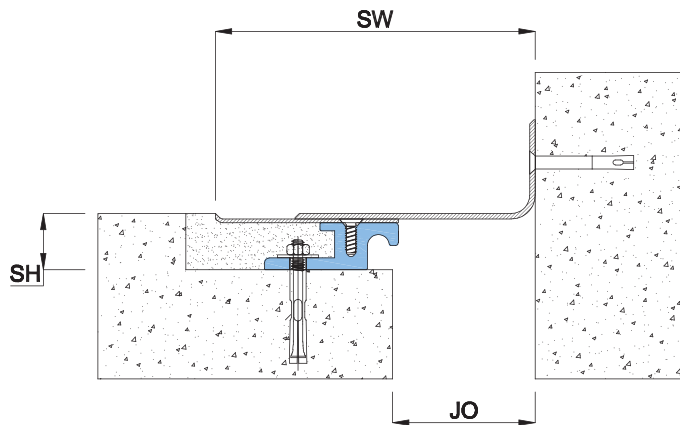
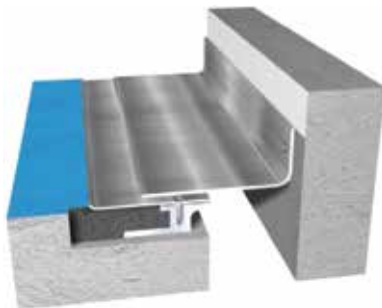
EXT.
Application

INT.
Application

Seismic
Movement

FLOOR
USE

Corner Application GYC



Application	Code	JO	SH	SW	± Movement (%)			Load (Ton)
					Millimeter			
					Horizontal	Vertical	Shear	
Straight (S)	GYS 02	51	30	201	50	50	Excellent	3.5
	GYS 03	76	31	261	50	50	Excellent	3.5
	GYS 04	102	31	322	50	50	Excellent	3.5
	GYS 06	152	37	452	50	50	Excellent	3
	GYS 08	203	37	578	50	50	Excellent	3
	GYS 10	254	37	714	50	50	Excellent	3
GYS 12	305	40	830	50	50	Excellent	3	
Corner (C)	GYC 02	51	30	129	50	13	Excellent	3.5
	GYC 03	76	31	173	50	13	Excellent	3.5
	GYC 04	102	31	226	50	13	Excellent	3.5
	GYC 06	152	37	331	50	13	Excellent	3
	GYC 08	203	37	431	50	13	Excellent	3
	GYC 10	254	37	531	50	13	Excellent	3
GYC 12	305	40	639	50	13	Excellent	3	

Details

Usage : Floor

Joint width : 2"-12"

Optional : Vapor/Fire Barrier

As Prospec Specialties' policy is one of continual progress for the improvement of the company's services to its customers, the company reserves the right to modify the specifications of its products without notice.