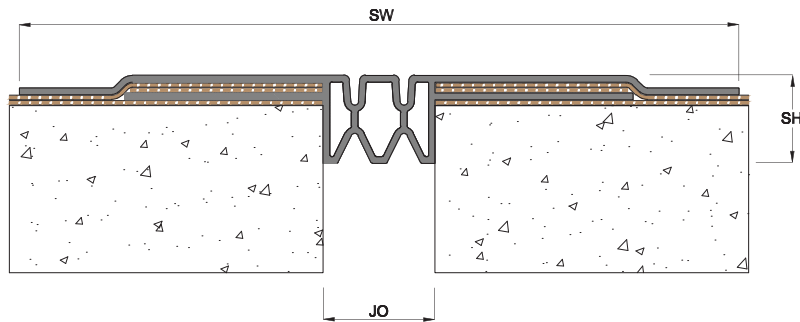
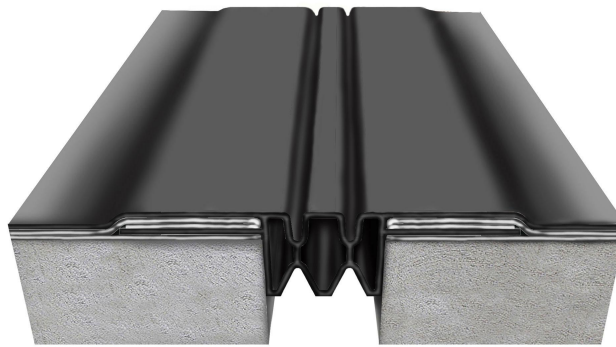


Features

- System designed for surface mount installation
- Waterproof/Watertight
- EPDM Seal profile for watertight application
- System allows full seismic movements
- Suitable for external applications
- Fire Barriers are optionally available

Straight Application KJS

- KJS**
Series
- EXT.**
Application
- Seismic**
Movement
- ROOF**
USE



Details

Usage : Roof

Joint width : 2" - 4"

Optional : Fire Barrier

Application	Code	JO	SH	SW	± Movement (%)			Load (Ton)
					Horizontal	Vertical	Shear	
Straight (S)	KJS 02	51	40	327	50	*	*	*
	KJS 03	76	40	352	50	*	*	*
	KJS 04	102	40	377	50	*	*	*

As Prospec Specialties' policy is one of continual progress for the improvement of the company's services to its customers, the company reserves the right to modify the specifications of its products without notice.