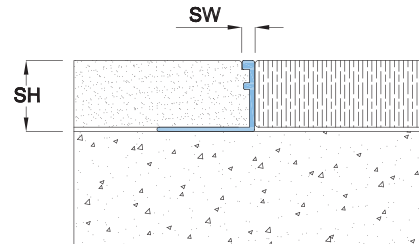


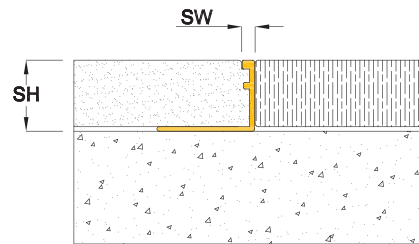
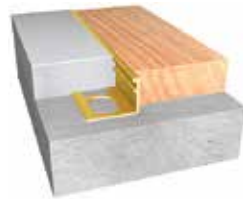
Features

- Transition Strip
- Commonly used for easy installation
- Available in Aluminium (VAS), Brass (VBS) and Stainless Steel (VSS)

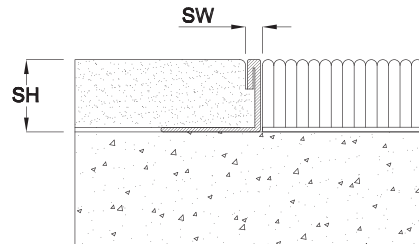
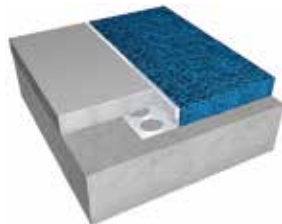
Straight Application VAS (Aluminium)



Straight Application VBS (Brass)



Straight Application VSS (Stainless Steel)



V
Series

INT.
Application

FLOOR
USE

Application	Code	JO	SH	SW	± Movement (%)			Load (Ton)
		Millimeter			Horizontal	Vertical	Shear	
Straight (S)	VAS 007	*	8	3	*	*	*	*
	VAS 010	*	11	3	*	*	*	*
	VAS 015	*	16	3	*	*	*	*
	VAS 020	*	21	3	*	*	*	*
	VAS 025	*	26	3	*	*	*	*
	VAS 030	*	31	3	*	*	*	*
Straight (S)	VBS 007	*	8	3	*	*	*	*
	VBS 010	*	11	3	*	*	*	*
	VBS 015	*	16	3	*	*	*	*
	VBS 020	*	21	3	*	*	*	*
	VBS 025	*	26	3	*	*	*	*
	VBS 030	*	31	3	*	*	*	*
Straight (S)	VSS 007	*	8	3	*	*	*	*
	VSS 010	*	11	3	*	*	*	*
	VSS 015	*	16	3	*	*	*	*
	VSS 020	*	21	3	*	*	*	*
	VSS 025	*	26	3	*	*	*	*
	VSS 030	*	31	3	*	*	*	*

Details

Usage : Floor

Sight width : 3 mm