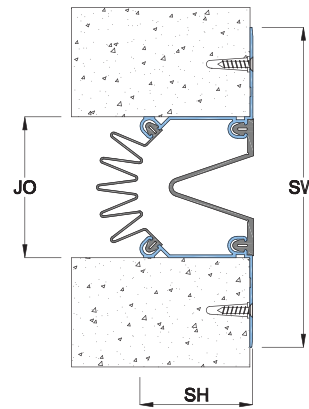
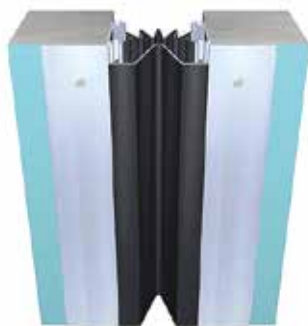


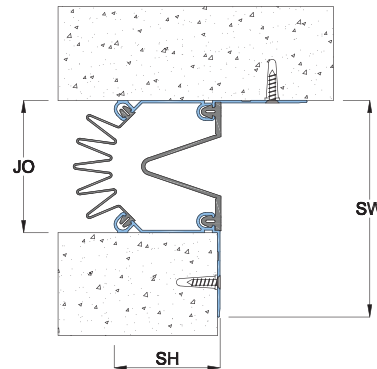
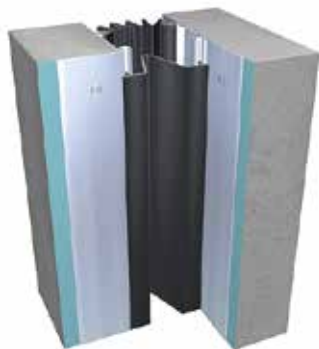
Features

- Surface mounted system ideal for retrofit installation
- Firmly fixed Santoprene gasket movement tractability without shearing or breaking
- Centering Bar system for wider gaps
- Extra-large sizes available
- System is suitable for full seismic movements
- Commonly used system that is easy to install and maintain
- Suitable for external applications
- Fire Barriers are optionally available
- Integral back-seal

Straight Application FTS



Corner Application FTC



FT Series

EXT. Application

Seismic Movement

WALL USE

CEILING USE

Powder Coat Finish:
Any RALColor



Seal Colors:

Anodized Finishes:



Details

Usage : Wall/Ceiling

Joint width : 1" - 6"

Optional : Fire Barrier

Wider Joint Cover available at request

| Application | Code | JO | SH | SW | ± Movement (%) | | | Load (Ton) |
|--------------|------------|--------|----|-----|----------------|----|-----------|------------|
| | | | | | Millimeter | | | |
| Straight (S) | FTS 01 | 42 | 60 | 139 | 50 | 50 | Excellent | * |
| | FTS 02 | 51 | 60 | 148 | 50 | 50 | Excellent | * |
| | FTS 03 | 76 | 60 | 173 | 50 | 50 | Excellent | * |
| | FTS 04 | 102 | 60 | 198 | 50 | 50 | Excellent | * |
| | FTS 06 | 152 | 60 | 249 | 50 | 50 | Excellent | * |
| | Corner (C) | FTC 01 | 42 | 60 | 90 | 50 | 50 | Excellent |
| FTC 02 | | 51 | 60 | 98 | 50 | 50 | Excellent | * |
| FTC 03 | | 76 | 60 | 124 | 50 | 50 | Excellent | * |
| FTC 04 | | 102 | 60 | 149 | 50 | 50 | Excellent | * |
| FTC 06 | | 152 | 60 | 200 | 50 | 50 | Excellent | * |