

BVS Series (02 system)

Note: Verify that the structural gap and blockout dimensions are in conformance with submittal data before beginning installation. If this is a Fire Rated Assembly, the fire barrier must be installed before the Architectural Joint System. Refer to the fire barrier instructions for specific system installation.

Fig. 1

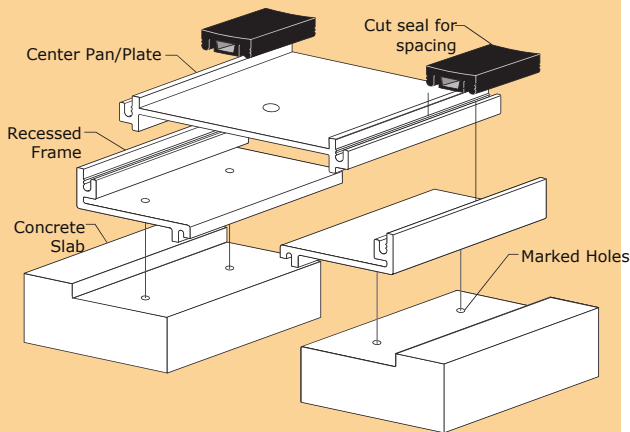


Fig. 2.

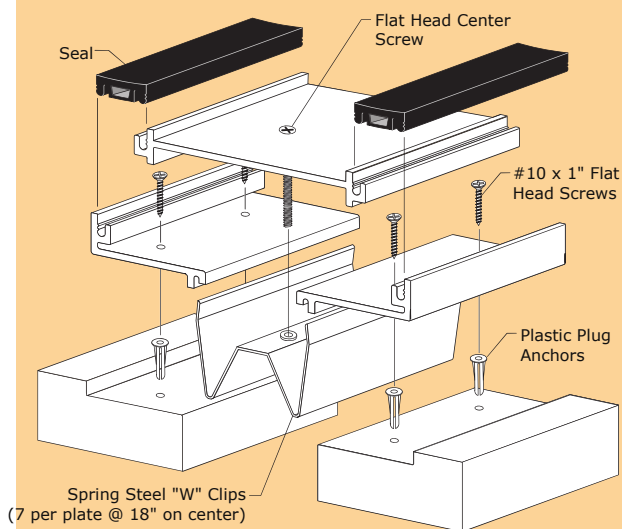
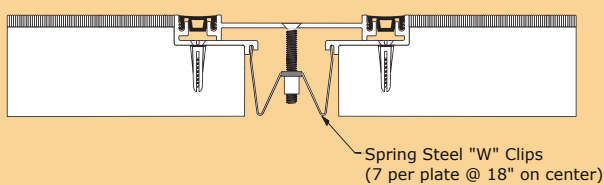


Fig. 2a.



1. Install the architectural joint system on a level surface within the blockout. To determine blockout depth, deduct thickness of floor finish from frame height. Make sure top of frame is level with the finished floor height. This may require adding leveling compound to raise the tops of the frames.

Figure 1

2. Cut the aluminum frames to the desired length.
3. Place the outer frames in the blockout so that they are centered over the structural gap. Place the center pan/plate centrally over the outer frames. To properly space frames, cut six small 2" sections of seal. Insert one at each end and one in the center of both sides of the outer frames.
4. Mark the pre-drilled hole locations on the substrate.
5. Remove the frame assembly from the blockout.

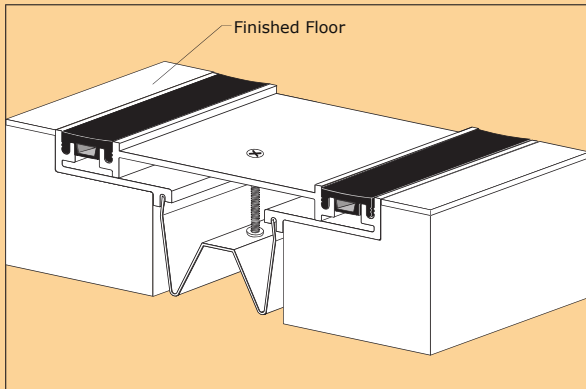
Figure 2

6. Drill holes in the blockout using a 1/4" (6mm) concrete drill bit to 1- 1/8" (30mm) depth. Insert plastic plug anchors.
 - 6a. Optional EPDM Vapor Barrier: Lay continuous bead of butyl rubber caulk in both sides of the blockout. Starting at one end of the frame assembly, place vapor barrier evenly in blockout allowing the excess material to drape into the structural gap. If necessary, vapor barrier may be fastened to substrate with masonry nails. Fold ends up or weep out.

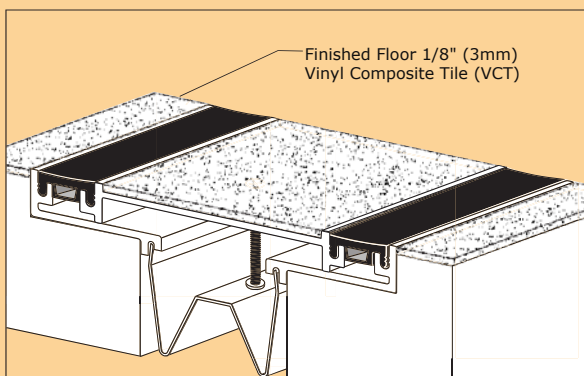


BVS Series (02 system)

Fig. 3



(Floor to Floor completed installation)



7. To attach the center pan/plate to the outer frames, place spring steel "W" clips into the channels of the outer frames. Position spring clips beneath counter-sunk holes in pan/plate and secure loosely using 1/4-20 x 2" flat head screws.
8. Return the frame assembly in position over the drilled hole locations. Secure the outer frames in place by using one 1" flat head screw for each plastic plug. Remove temporary spacers.
9. Insert the seals into the recessed frame slots until the seals are flush with the tops of the frames.
NOTE: To assist in installing the seal, apply a mist of soapy water solution to the back of the seal. A 1" wide seam roller may be used to fully engage the seal ears into the frame slots.

Figure 3

10. Backfill the blockout and install the floor finish level to the top of the pan/plate. Clean the exposed surfaces with a non-solvent cleaner as required.

BVS Series (04 & 06 systems)

Note: Verify that the structural gap and blockout dimensions are in conformance with submittal data before beginning installation. If this is a Fire Rated Assembly, the fire barrier must be installed before the Architectural Joint System. Refer to the fire barrier instructions for specific system installation.

Fig. 1

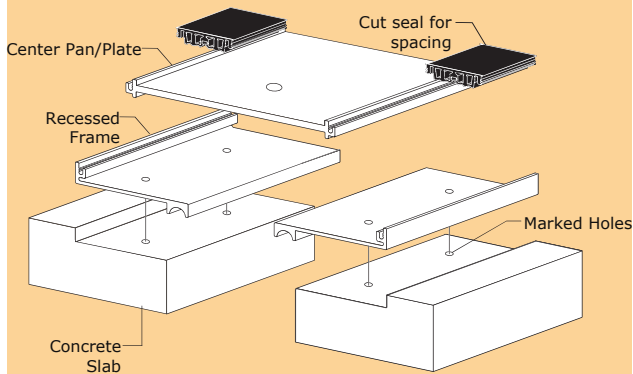


Fig. 2.

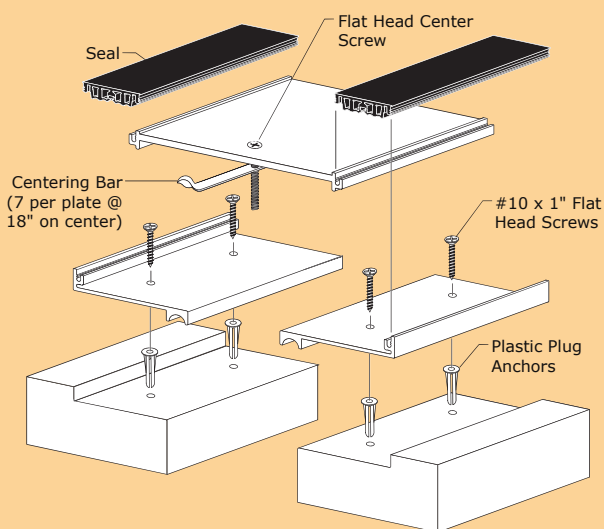
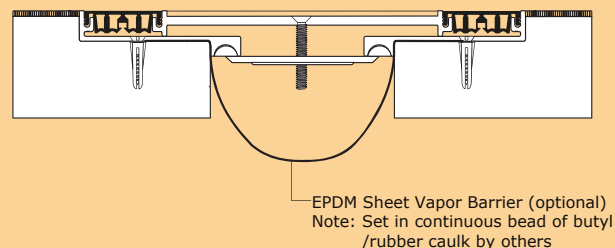


Fig. 2a.



1. Install the architectural joint system on a level surface within the blockout. To determine blockout depth, deduct thickness of floor finish from frame height. Make sure top of frame is level with the finished floor height. This may require adding leveling compound to raise the tops of the frames.

Figure 1

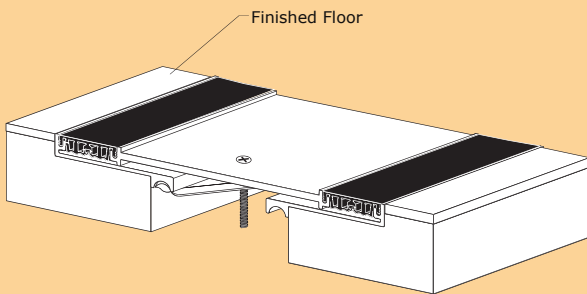
2. Cut the aluminum frames to the desired length.
3. Place the outer frames in the blockout so that they are centered over the structural gap. Place the center pan/plate centrally over the outer frames. To properly space frames, cut six small 2" sections of seal. Insert one at each end and one in the center of both sides of the outer frames.
4. Mark the pre-drilled hole locations on the substrate.
5. Remove the frame assembly from the blockout. Remove temporary spacers.

Figure 2

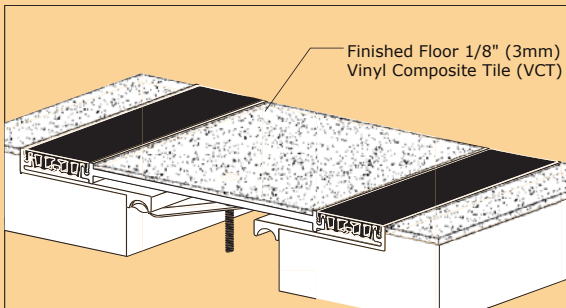
6. Drill holes in the blockout using a 1/4" (6mm) concrete drill bit to 1- 1/8" (30mm) depth. Insert plastic plug anchors.
- 6a. Optional EPDM Vapor Barrier: Lay continuous bead of butyl rubber caulk in both sides of the blockout. Starting at one end of the frame assembly, place vapor barrier evenly in blockout allowing the excess material to drape into the structural gap. If necessary, vapor barrier may be fastened to substrate with masonry nails. Fold ends up or weep out. (See Figure 2a)



Fig. 3



(Floor to Floor completed installation)



7. Return the frames into position over the drilled hole locations. Secure in place by using one 1" flat head screw for each plastic plug.

8. Assemble the center pan/plate by inserting 1/4-20 x 2" flat head screws through the counter-sunk holes and threading them loosely onto the centering bars. Centering bars should be aligned parallel to the center pan/plate.

9. Position the assembled center pan/plate onto the outer frames and center. Tighten the screws to engage the centering bars in the frame channels.

10. Insert the seals into the recessed frame slots until the seals are flush with the tops of the frames.

NOTE: To assist in installing the seal, apply a mist of soapy water solution to the back of the seal. A 1" wide seam roller may be used to fully engage the seal ears into the frame slots.

Figure 3

11. Backfill the blockout and install the floor finish level to the top of the pan/plate. Clean the exposed surfaces with a non-solvent cleaner as required.